

# TAKSTAR®



**PC-K200** | Professional Recording  
Microphone

User Manual

# PC-K200 Professional Recording Microphone

---

## ■ Preface

Dear Customer,

Thank you for purchasing Takstar PC-K200 Professional Recording Microphone. In order to better understand and use the product, please read this manual carefully. If you have any questions or suggestions, please contact our local dealer.

## ■ Features

- Revamped, streamlined design, all-metal construction, simple yet elegant.
- Upgraded tonal performance, better balanced bass/mid/treble, transparent and enticing timber.
- Ultra-low self-noise circuit for cleaner and clearer audio.
- Retains power indicator for status overview at a glance.
- Includes a compact mic clamp that's easy to install and carry.
- Includes a windscreen that protects mic from moisture and minimizes pops noise.

## ■ Applications

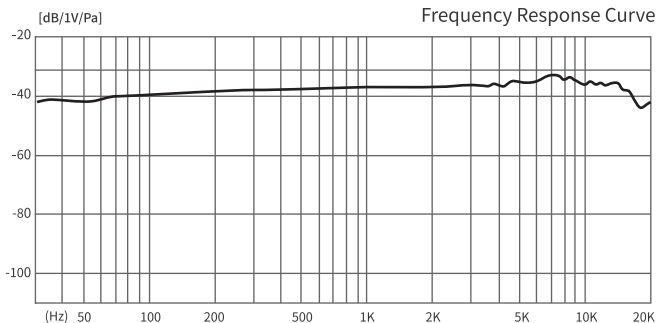
Live broadcast, karaoke, personal recording, instrument recording

## ■ Package Contents

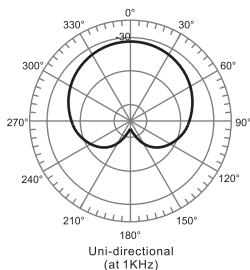
- Microphone .....1 PC
- Windscreen .....1 PC
- Mic Clamp.....1 PC
- User Manual.....1 PC

# PC-K200 Professional Recording Microphone

## ■ Specifications



- Capsule:  $\varnothing 16\text{mm}$  condenser
- Polar Pattern: cardioid
- Frequency Response: 20Hz-20KHz
- Sensitivity:  $-33\text{dB} \pm 3\text{dB}$  ( $0\text{dB}=1\text{V/Pa}$  at 1KHz)
- Equivalent Noise Level:  $\leq 28\text{dBA}$  (IEC 581-5)
- Peak SPL: 130dB ( $\text{THD} \leq 0.5\%$  at 1KHz)
- Output Impedance:  $200\Omega \pm 30\%$  (at 1KHz)
- Power Supply: 48V phantom power
- Dimensions:  $\varnothing 54\text{mm} \times 148\text{mm}$
- Weight: about 351g



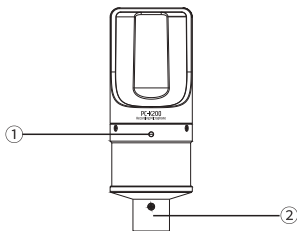
Note: The above data are measured by Takstar laboratory, and Takstar has the final interpretation right!

# PC-K200 Professional Recording Microphone

---

## ■ Function Descriptions

- ① Power indicator: when the mic is connected to relevant device and running, the LED illuminates blue; when XLR cable is disconnected, the LED light will be off.
- ② XLR interface: connect with audio device (e.g., audio interface, mixer, power amp) via XLR cable.

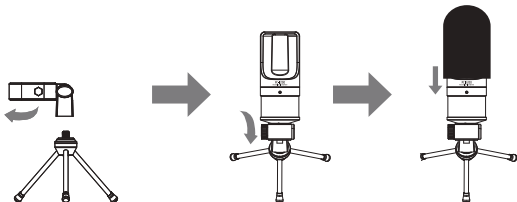


## ■ Operation Instructions

1. Install the mic clamp clockwise onto the mic stand or boom arm.
2. The front side of the mic is the side with silkscreened “PC-K200” and blue LED indicator. Face the front side towards the sound source. Install the mic onto the mic clamp, adjust to a proper angle, and tighten the clamp screw until fully secured. It is recommended to keep the installed mic tilted upwards to prevent accidental mic drop and damage in case of loose mic clamping, as shown:
3. Install the included foam windscreen onto the mic.

Note: The foam windscreen can filter out plosives and protect microphone capsule from moisture such as speech droplets, but it may affect audio transparency slightly and therefore should be used at your preference.

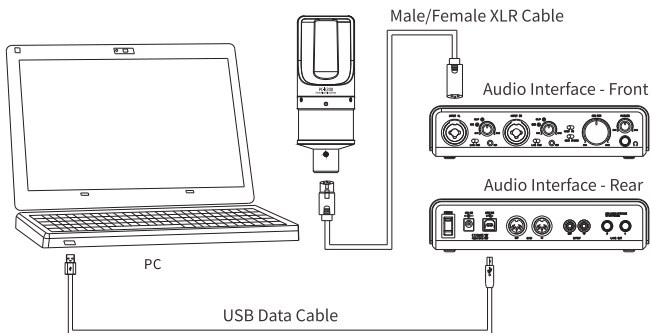
## PC-K200 Professional Recording Microphone



4. Align the lock button on XLR plug with the bottom socket on mic, then push the plug into the mic fully until it locks into place. Connect the other end of the XLR cable to an audio device (e.g., audio interface, mixer, power amp) with built-in 48V phantom power supply, or use an external 48V power supply (not included) if none;

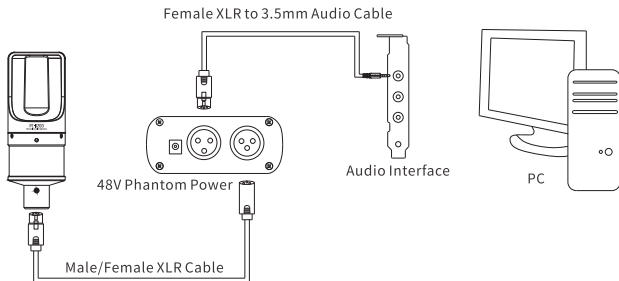
Note: The phantom power supply requirement for this product is DC 48V  $\pm$  4V/2.8mA  $\pm$  20%.

① Connection for audio device with built-in 48V phantom power:



## PC-K200 Professional Recording Microphone

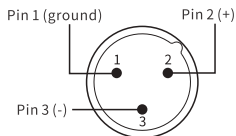
### ② Connection for audio device without built-in 48V phantom power:



5. Fix the connection cable onto the mic stand or boom arm, and leave a section/loop of cable at the mic. This helps to effectively isolate the vibration.

6. Please turn the volume to the minimum on the audio device before switching on the phantom power. Then gradually increase the volume to an appropriate level. This helps to prevent speaker damage by high sound pressure. Keep a proper distance between mic and speakers, and try not to point the mic towards the speakers to avoid feedback howling.

7. The mic output uses a three-pin XLR male connector, as shown below:





### ■ Safety Instructions

To avoid electric shock, overheat, fire, radiation, explosion, mechanical risk and injury or property loss due to improper use, please read and observe the following items before use:

1. Please check if the power of the connected equipment matches with that of this product before operation. Adjust the volume to proper level during operation. Do not operate at over-power or high-volume level for extended time to avoid product malfunction.
  2. If there is any abnormality during use (e.g., smoke, strange odor), please kill the power switch and unplug from power source, then send the product to the local dealer for repair.
  3. Keep this product and its accessories in a dry and ventilated area. Do not store in a humid or dusty area for extended time. Keep away from fire, rain, liquid intrusion, bumping, throwing, vibrating, or from blocking any ventilation openings, to prevent malfunction.
  4. The product must, when installed on walls or ceilings, be fixed firmly in place at adequate strength to prevent from falling.
  5. Please abide by safety rules during operation. Do not use the product in places prohibited by laws or regulations to avoid accident.
  6. Do not disassemble or repair the product by yourself to avoid injury.
- If you have any questions or require any services, please contact our local dealer.

## ■ Label Meanings

 This device is compliant with the limits of the European Council Directive on the approximation of the laws of the member states relating to electromagnetic compatibility according to RL2004/108/EG and European Low Voltage Directive RL2006/95/EG.

 Note: This equipment has been tested and found to comply with the limits for a Class B digital device, pursuant to part 15 of the FCC Rules. These limits are designed to provide reasonable protection against harmful interference in a residential installation. This equipment generates, uses, and can radiate radio frequency energy and, if not installed and used in accordance with the instructions, may cause harmful interference to radio communications. However, there is no guarantee that interference will not occur in a particular installation.

If this equipment does cause harmful interference to radio or television reception, which can be determined by turning the equipment off and on, the user is encouraged to try to correct the interference by one or more of the following measures:

- Reorient or relocate the receiving antenna.
- Increase the separation between the equipment and receiver.
- Connect the equipment to an outlet on a circuit different from that to which the receiver is connected.
- Consult the dealer or an experienced radio/TV technician for help.

Changes or modifications not expressly approved by the complying party may cause the user to lose permission to operate the device.

This device complies with part 15 of the FCC Rules. Operation is subject to the following two conditions:



# PC-K200 Professional Recording Microphone

---

- 1) This device may not cause harmful interference, and
- 2) This device must accept any interference received, including interference that may cause undesired operation.



This symbol indicates that this product should not be disposed of with your household waste, according to the WEEE directive (2012/19/EU) and your national law. This product should be handed over to an authorized collection site for recycling waste electrical and electronic equipment (WEEE). Improper handling of this type of waste could have a possible negative impact on the environment and human health due to potentially hazardous substances that are generally associated with WEEE. At the same time, your cooperation in the correct disposal of this product will contribute to the effective usage of natural resources. For more information about where you can drop off your waste equipment for recycling, please contact your local city office, waste authority, or your household waste disposal service.

## ■ About This Manual

This manual contains up-to-date technical specifications as of printing. However, specifications contained herein may not conform to your particular product since Takstar is constantly improving its products. Also, specifications, devices or accessories available may vary from region to region. If you have any questions, please contact our local sales outlet. For the latest version/more information, please visit our website: <https://www.takstar.com/>



Scan for more  
product information

Guangdong Takstar Electronic Co., Ltd.  
Address: No. 2 Fu Kang YiRd., Longxi Boluo  
Huizhou, Guangdong 516121 China  
Tel: 86 752 6383644 Fax: 86 752 6383952  
Email: [sales@takstar.com](mailto:sales@takstar.com)  
Website: [www.takstar.com](http://www.takstar.com)